



**THE SOLAR AND LED ROAD LIGHT SERIES**

**LED**

Application:  
 Roads, Parks, Industrial areas  
 streets



JY22006S-100



JY22007S-100



JY22007N-50

|              |             |          |             |       |
|--------------|-------------|----------|-------------|-------|
| JY22006S-100 | 590X150X120 | 3.2V 5AH | 202PCS 5730 | 6V 6W |
| JY22007S-100 | 590X150X102 | 3.2V 5AH | 202PCS 5730 | 6V 6W |
| JY22007N-50  | 590X150X110 | 3.2V 4AH | 96PCS 5730  | 6V 4W |
| JY22006N-50  | 590X150X130 | 3.2V 4AH | 96PCS 5730  | 6V 4W |



L22008



L22009



JY22006N-50

| MODEL  | POWER  | LUMEN         | VOLTAGE            | CCT RANGE   | COLOUR | THE MATERIAL | GRADE |
|--------|--------|---------------|--------------------|-------------|--------|--------------|-------|
| L22008 | 20/30W | 1600Lm/2400Lm | AC100-260V/50-60Hz | 3000K/6500K | GRAY   | AL+PC        | IP65  |
| L22009 | 20/30W | 1600Lm/2400Lm | AC100-260V/50-60Hz | 3000K/6500K | GRAY   | AL+PC        | IP65  |



L22007-20



L22006-20



L22006A-18/24/36

| MODEL            | POWER       | LUMEN                | VOLTAGE            | CCT RANGE   | COLOUR | THE MATERIAL | GRADE |
|------------------|-------------|----------------------|--------------------|-------------|--------|--------------|-------|
| L22007-20        | 20W         | 1600Lm               | AC100-260V/50-60Hz | 3000K/6500K | GRAY   | AL+PC        | IP65  |
| L22006-20        | 20W         | 1600Lm               | AC100-260V/50-60Hz | 3000K/6500K | GRAY   | AL+PC        | IP65  |
| L22006A-18/24/36 | 18W/24W/36W | 1080Lm/1600Lm/2400Lm | AC100-260V/50-60Hz | 3000K/6500K | GRAY   | AL+PC        | IP65  |



L22006B-18



L22007B-18



L22007A-18/24/36

| MODEL            | POWER       | LUMEN                | VOLTAGE            | CCT RANGE   | COLOUR | THE MATERIAL | GRADE |
|------------------|-------------|----------------------|--------------------|-------------|--------|--------------|-------|
| L22006B-18       | 18W         | 1080Lm               | AC100-260V/50-60Hz | 3000K/6500K | GRAY   | AL+PC        | IP65  |
| L22007B-18       | 18W         | 1080Lm               | AC100-260V/50-60Hz | 3000K/6500K | GRAY   | AL+PC        | IP65  |
| L22007A-18/24/36 | 18W/24W/36W | 1080Lm/1600Lm/2400Lm | AC100-260V/50-60Hz | 3000K/6500K | GRAY   | AL+PC        | IP65  |

# THE SOLAR GARDEN AND ROAD LIGHT SERIES

LED 

Application:  
Roads, Parks, Industrial areas  
streets



22005-1/22005-2 E27



22006-1 E27



22006-2 E27

| MODEL         | VOLTAGE            | CCT RANGE   | COLOUR | THE MATERIAL | GRADE |
|---------------|--------------------|-------------|--------|--------------|-------|
| 22005-1/2 E27 | AC100-260V/50-60Hz | 3000K/6500K | GRAY   | AL+PC        | IP65  |
| 22006-1 E27   | AC100-260V/50-60Hz | 3000K/6500K | GRAY   | AL+PC        | IP65  |
| 22006-2 E27   | AC100-260V/50-60Hz | 3000K/6500K | GRAY   | AL+PC        | IP65  |



JY218



JY219



JY3027



JY3028



JY3029



JY3030

|        |            |           |              |        |
|--------|------------|-----------|--------------|--------|
| JY218  | Ø 550X100  | 3.2V 20AH | 1064PCS 5730 | 6V 20W |
| JY219  | Ø 550X94   | 3.2V 20AH | 768PCS 5730  | 6V 20W |
| JY3027 | 495X210X50 | 3.2V 16AH | 518PCS 5730  | 6V 18W |
| JY3028 | 495X210X50 | 3.2V 11AH | 336PCS 5730  | 6V 12W |
| JY3029 | 495X210X50 | 3.2V 15AH | 394PCS 5730  | 6V 15W |
| JY3030 | 495X210X50 | 3.2V 18AH | 618PCS 5730  | 6V 18W |



JY003A-60



JY003A-90



JY003A-120



JY004-60



JY004-100



JY004-160

|            |            |           |             |        |
|------------|------------|-----------|-------------|--------|
| JY003A-60  | 485X217X55 | 3.2V 9AH  | 96PCS 5730  | 6V 9W  |
| JY003A-90  | 620X238X60 | 3.2V 12AH | 144PCS 5730 | 6V 12W |
| JY003A-120 | 722X238X60 | 3.2V 15AH | 192PCS 5730 | 6V 15W |
| JY004-60   | 509X236X45 | 3.2V 9AH  | 128PCS 5730 | 6V 9W  |
| JY004-100  | 619X256X48 | 3.2V 12AH | 214PCS 5730 | 6V 12W |
| JY004-160  | 720X256X48 | 3.2V 15AH | 300PCS 5730 | 6V 15W |

LED Application:  
Roads, Parks, Industrial areas  
streets

## THE SOLAR ROAD LIGHT SERIES



JY006-100



JY006-150



JY006-200



JY008A-80



JY008A-100



JY008A-160

|            |            |           |             |        |
|------------|------------|-----------|-------------|--------|
| JY006-100  | 480X237X55 | 3.2V 9AH  | 192PCS 5730 | 6V 9W  |
| JY006-150  | 620X255X60 | 3.2V 12AH | 288PCS 5730 | 6V 12W |
| JY006-200  | 720X255X60 | 3.2V 15AH | 384PCS 5730 | 6V 15W |
| JY008A-80  | 491X228X55 | 3.2V 9AH  | 140PCS 5730 | 6V 9W  |
| JY008A-100 | 603X246X60 | 3.2V 12AH | 210PCS 5730 | 6V 12W |
| JY008A-160 | 695X246X60 | 3.2V 15AH | 280PCS 5730 | 6V 15W |

LED Application:  
Roads, Parks, Industrial areas  
streets

## THE SOLAR FLOOD LIGHT SERIES



JY6001A



JY6001B



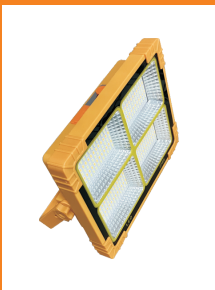
JY6001C



JY6002



|             |            |      |             |           |        |            |
|-------------|------------|------|-------------|-----------|--------|------------|
| JY6001A-25  | 204X180X47 | 25W  | 66PCS 5730  | 3.2V 3AH  | 6V 5W  | 220X137X5  |
| JY6001A-40  | 248X229X49 | 40W  | 98PCS 5730  | 3.2V 5AH  | 6V 8W  | 270X180X15 |
| JY6001A-60  | 272X246X65 | 60W  | 136PCS 5730 | 3.2V 7AH  | 6V 12W | 350X235X15 |
| JY6001A-100 | 318X282X75 | 100W | 261PCS 5730 | 3.2V 20AH | 6V 18W | 350X350X15 |
| JY6001A-200 | 348X308X78 | 200W | 400PCS 5730 | 3.2V 26AH | 6V 25W | 450X350X15 |
| JY6002-25   | 193X145X50 | 25W  | 52PCS 5730  | 3.2V 5AH  | 6V 8W  | 270X180X15 |
| JY6002-40   | 228X180X50 | 40W  | 78PCS 5730  | 3.2V 8AH  | 6V 15W | 350X235X15 |
| JY6002-60   | 256X208X65 | 60W  | 118PCS 5730 | 3.2V 12AH | 6V 18W | 350X350X15 |
| JY6002-100  | 300X250X75 | 100W | 202PCS 5730 | 3.2V 16AH | 6V 30W | 530X350X15 |
| JY6002-200  | 335X270X80 | 200W | 398PCS 5730 | 3.2V 20AH | 6V 35W | 580X350X15 |
| JY6002-300  | 397X310X85 | 300W | 622PCS 5730 | 3.2V 24AH | 6V 38W | 600X350X15 |
| JY6002-500  | 500X360X85 | 500W | 898PCS 5730 | 3.2V 26AH | 6V 40W | 700X350X15 |

LED Application:  
Roads, Parks, Industrial areas  
streetsPORTABLE SOLAR CHARGING  
LAMP SERIES

JY6806



JY6807



JY6808



JY6809



JY6810

|        |            |       |       |             |          |
|--------|------------|-------|-------|-------------|----------|
| JY6806 | 219X178X50 | 1000W | 5V/5W | 336PCS 5730 | 3.7V 6AH |
| JY6807 | 175X155X58 | 800W  | 5V/3W | 264PCS 5730 | 3.7V 6AH |
| JY6808 | 210X150X60 | 200W  | 5V/3W | 70PCS 5730  | 3.7V 6AH |
| JY6809 | 215X175X55 | 1000W | 5V/5W | 336PCS 5730 | 3.7V 6AH |
| JY6810 | 245X165X55 | 600W  | 5V/5W | 180PCS 5730 | 3.7V 6AH |

# GLOBE LIGHT SERIES

LED 

Application:  
Roads, Parks, Industrial areas  
streets



76018



76019



76020



76021



76022



76023



76034



76025



76026



76034A



76018A



76027



76028



76038-S

| MODEL    | POWER | PRODUCT SIZE  |
|----------|-------|---------------|
| 76018-6  | 15W   | Ø150×150mm    |
| 76018-8  | 25W   | Ø200×200mm    |
| 76018-10 | 40W   | Ø250×250mm    |
| 76018-12 | 60W   | Ø300×300mm    |
| 76019-6  | 15W   | 222×150×223mm |
| 76019-8  | 25W   | 247×200×223mm |
| 76020-6  | 15W   | 222×150×223mm |
| 76020-8  | 25W   | 247×200×271mm |
| 76021-6  | 15W   | 185×150×180mm |

| MODEL    | POWER | PRODUCT SIZE  |
|----------|-------|---------------|
| 76022-6  | 15W   | 185×150×180mm |
| 76023-6  | 15W   | 150×150×185mm |
| 76023-8  | 25W   | 200×200×185mm |
| 76034-6  | 15W   | 150×150×185mm |
| 76034-8  | 25W   | 200×200×185mm |
| 76034-10 | 40W   | 250×250mm     |
| 76034-12 | 60W   | 300×300mm     |
| 76025-6  | 15W   | 225×185×150mm |
| 76025-8  | 25W   | 278×220×200mm |

| MODEL    | POWER | PRODUCT SIZE  |
|----------|-------|---------------|
| 76026-6  | 15W   | 225×185×150mm |
| 76026-8  | 25W   | 278×220×200mm |
| 76034A-6 | 15W   | Ø150×272mm    |
| 76034A-8 | 25W   | Ø200×322mm    |
| 76018A-6 | 15W   | Ø150×272mm    |
| 76018A-8 | 25W   | Ø200×322mm    |
| 76027    | 15W   | 244×167×110mm |
| 76028    | 15W   | 185×150×180mm |
| 76038-S  | /     | Ø118×120mm    |

# LED WALL LIGHT SERIES

LED 

Application:  
Roads, Parks, Industrial areas  
streets



L83078 W27  
LED 9W



L83076 W27  
LED 9W



JY13020 SOLAR



JY13018 SOLAR



JY13021 SOLAR

|         |             |                    |             |         |
|---------|-------------|--------------------|-------------|---------|
| JY13018 | 195X150X250 | 18650 3.7V 2400mAH | 9X2PCS 2835 | 6V 2.5W |
| JY13020 | 210X200X252 | 18650 3.7V 1200mAH | 9X2PCS 2835 | 5V 1W   |
| JY13021 | 220X200X260 | 18650 3.7V 1200mAH | 9X2PCS 2835 | 5V 1W   |



L83074 W27  
LED 9W



L83070W27  
LED 9W



L74018  
LED 6W/8W



L72036-01/02  
COB10W  
3000K/6500K



L72037-01/02  
COB10W  
3000K/6500K

## LED WALL LIGHT SERIES

LED 

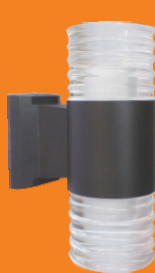
Application:  
Roads, Parks, Industrial areas  
streets



L72002 10W



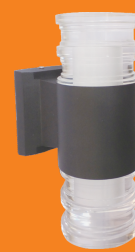
L72004 2x10W



JYZS-L653  
2x8W



JYZS-L654  
2x8W



JYZS-L655  
2x8W



JYZS-L658  
2x8W

## LAWN LIGHT SERIES

LED 

Application:  
Roads, Parks, Industrial areas  
streets



L65004



L65005



L65006



L65001



L65008-1



L65008-2

| MODEL    | POWER            | LUMEN | VOLTAGE            | CCT RANGE   | GRADE | PRODUCT SIZE |
|----------|------------------|-------|--------------------|-------------|-------|--------------|
| L65004   | 10W / E27MAX.60W | 800Lm | AC100-260V/50-60Hz | 3000K/6500K | IP43  | Ø135×900mm   |
| L65005   | 10W / E27MAX.60W | 800Lm | AC100-260V/50-60Hz | 3000K/6500K | IP43  | Ø135×900mm   |
| L65006   | 10W / E27MAX.60W | 800Lm | AC100-260V/50-60Hz | 3000K/6500K | IP43  | Ø110×600mm   |
| L65001   | 10W / E27MAX.60W | 800Lm | AC100-260V/50-60Hz | 3000K/6500K | IP43  | Ø110×600mm   |
| L65008-1 | 10W / E27MAX.60W | 800Lm | AC100-260V/50-60Hz | 3000K/6500K | IP43  | Ø118×560mm   |
| L65008-2 | 10W / E27MAX.60W | 800Lm | AC100-260V/50-60Hz | 3000K/6500K | IP43  | Ø118×560mm   |

LED 

Application:  
Roads, Parks, Industrial areas  
streets

## THE SOLAR GROUND LAMP SERIES



JY15005



JY15006



JY15007



JY15009



JY15010



JY15011



JY15012

|         |             |                    |            |           |
|---------|-------------|--------------------|------------|-----------|
| JY15005 | 290X95X340  | 18650 3.7V 1200mAH | 7PCS 5050  | 5.5V 1.1W |
| JY15006 | 170X140X290 | 18650 3.7V 2000mAH | COB 3W     | 6V 1.5W   |
| JY15007 | 94X158X280  | 18650 3.7V 1800mAH | 1PC 3535   | 5.5V 1.5W |
| JY15009 | 85X250X270  | 18650 3.7V 2000mAH | COB 3W     | 6V 3W     |
| JY15010 | 60X60X275   | 220V 50Hz          | COB 4W     |           |
| JY15011 | 85X85X320   | 220V 50Hz          | COB 10W    |           |
| JY15012 | 140X110X350 | 18650 3.7V 1200mAH | 20PCS 2835 | 5.5V 1.2W |

LED 

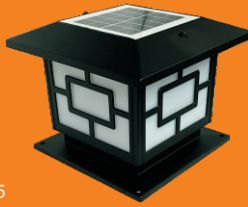
Application:  
Roads, Parks, Industrial areas  
streets

# THE SOLAR POST SERIES



JY13007-8/10

AL+plastic light  
control+time control  
JY13007-8  
200\*200\*230  
5V 4\*0.5W 12\*2PCS 2835  
18650 3.7V 2200mAH  
JY13007-10  
250\*250\*300  
5V 4\*0.8W 18\*2PCS 2835  
18650 3.7V 3000mAH



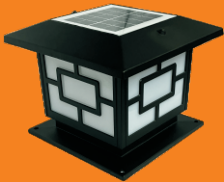
JY13008-8/10

AL+plastic light  
control+time control  
JY13008-8  
200\*200\*153  
5V 1.1W 9\*2PCS 2835  
18650 3.7V 1800mAH  
JY13008-10  
250\*250\*200  
5V 2W 12\*2PCS 2835  
18650 3.7V 2200mAH



JY13009-8

AL+plastic light  
control+time control  
JY13009-8  
182\*182\*240  
5V 4\*0.5W  
12\*2PCS 2835  
18650 3.7V  
1800mAH



JY13001-6/8

ABS+plastic light control  
+time control  
JY13001-6  
150\*150\*145 5V 1.0W  
9\*2PCS 2835  
18650 3.7V 1200mAH  
JY13001-8  
200\*200\*161 6V 1.6W  
12\*2PCS 2835  
18650 3.7V 1800mAH



JY13002-8

ABS+PMMA light  
control+remote  
control+time  
JY13002-8  
200\*200\*215 5V 1W  
9\*2PCS 2835  
18650 3.7V 1200mAH



JY13003-8

ABS+PMMA light  
control+remote  
control+time  
JY13003-8  
200\*200\*300  
5V 1W  
9\*2PCS 2835  
18650 3.7V  
1200mAH



JY13004-8/10/12

ABS+PMMA  
light control+time contro  
JY13004-8  
200\*200\*255 5V 1W  
9\*2PCS 2835  
18650 3.7V 1200mAH  
JY13004-10  
250\*250\*312 5V 1.5W  
12\*2PCS 2835  
18650 3.7V 1800mAH  
JY13004-12  
300\*300\*360 5V 1.5W  
12\*2PCS 2835  
18650 3.7V 1800mAH



JY13005-8

STAINLESS+PMMA  
light control  
+time control  
JY13005-8  
200\*200\*255  
5V 1W  
9\*2PCS 2835  
18650 3.7V  
1200mAH



LED 

Application:  
Roads, Parks, Industrial areas  
streets

# LANTERN LIGHT SERIES



JYZT01-83002-01



JY83002B-UP



JY83002B-HG



JY83002B-S



JY83002B-DN

Glasses:Frost Glass  
Fixture Color:  
BLACK、ANTIQUÉ GOLD  
WHITE、ANTIQUÉ GREEN

**PRODUCT PARAMETERS**

Power: 6W &8W / E27 60W  
Voltage: AC100-260V / 50~60Hz  
Grade: IP 43  
CCT range: 3000K / 6500K

LED 

Application:  
Roads, Parks, Industrial areas  
streets

THE SOLAR LANTERN LIGHT SERIES



JY72004



JY72000



JY83002B-L



JY83002A-L



JY13017



JY13016



JY01S-13004-01



JY01S-83002B-01



JY01S-83002A-01



JY13015



JY13019

|                 |             |                    |             |           |
|-----------------|-------------|--------------------|-------------|-----------|
| JY72004         | 160X160X213 | 18650 3.7V 1500mAH | 9X2PCS 2835 | 5V 2W     |
| JY72000         | Ø 160X860   | 18650 3.7V 1500mAH | 9X2PCS 2835 | 5V 2W     |
| JY83002B-L      | 145X145X290 | 18650 3.7V 1800mAH | 9X2PCS 2835 | 5V 1W     |
| JY83002A-L      | 145X145X365 | 18650 3.7V 2000mAH | 9X2PCS 2835 | 5V 4X0.5W |
| JY13015         | 192X145X310 | 18650 3.7V 2000mAH | 9X2PCS 2835 | 5V 4X0.5W |
| JY13016         | 192X145X250 | 18650 3.7V 1800mAH | 9X2PCS 2835 | 5V 1W     |
| JY13017         | 192X145X250 | 18650 3.7V 1800mAH | 120PCS 2835 | 5V 1W     |
| JY13019         | 195X145X350 | 18650 3.7V 2400mAH | 9X2PCS 2835 | 6V 2.5W   |
| JY01S-13004-01  | Ø 200X860   | 18650 3.7V 1200mAH | 9X2PCS 2835 | 5V 1W     |
| JY01S-83002B-01 | 145X145X860 | 18650 3.7V 1800mAH | 9X2PCS 2835 | 5V 1W     |
| JY01S-83002A-01 | 145X145X900 | 18650 3.7V 2000mAH | 9X2PCS 2835 | 5V 4X0.5W |

LED 

Application:  
Roads, Parks, Industrial areas  
streets

LED T8 FIXTURE SERIES



66008-4-C



66003E-20/40/60  
66006-2 610X32X49 iron with cover  
66006-4 1220X32X49 iron with cover  
66002-2 607X32X45 iron with fold lampholder  
66002-4 1217X32X45 iron with fold lampholder  
66008-C-2 610X32X49 iron with middle wire  
66008-C-4 1220X32X49 iron with middle wire  
66008-4-C 1220X31X50 Aluminium and connect one by one



66008C-2



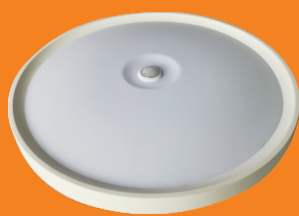
JY66008-1200L(with PIR and radar sensor)  
66003E-20 20W emergency fitting 40X23X170 19PCS 2835  
66003E-40 40W emergency fitting 40X23X320 32PCS 2835  
66003E-60 60W emergency fitting 40X23X520 50PCS 2835  
JY66008-1200L 30W 220V/50Hz 1190X53X40 184PCS 2835



66002-2/66002-4

66006-2/66006-4

WALL AND CEILING LIGHT SERIES



**JY69007** without sensor  
with voice sensor  
with radar sensor  
with PIR motion sensor



**JY69002**  
with voice sensor  
with PIR motion sensor



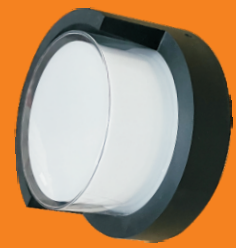
**JY69006**  
with voice sensor  
with radar sensor  
with PIR motion sensor



**JY69008** without sensor  
with voice sensor  
with radar sensor  
with PIR motion sensor



66088-6  
66088-10



66099-6  
66099-10

|          |     |            |               |        |
|----------|-----|------------|---------------|--------|
| 66088-6  | 6W  | 107X107X80 | 85-265V 3000K | ABS+PS |
| 66088-10 | 10W | 170X170X82 | 85-265V 3000K | ABS+PS |
| 66099-6  | 6W  | Ø107X80    | 85-265V 3000K | ABS+PS |
| 66099-10 | 10W | Ø170X82    | 85-265V 3000K | ABS+PS |



JY14001



JY14002-4



JY14002-6



JY14002-8



JY14003

|           |            |                    |             |            |
|-----------|------------|--------------------|-------------|------------|
| JY14001   | 155X115X94 | 18650 3.7V 2200mAH | 6X1PCS 3030 | 5V 1.7W    |
| JY14002-4 | 120X90X70  | 18650 3.7V 1500mAH | 4PCS 3030   | 5.5V 1.3W  |
| JY14002-6 | 140X90X70  | 18650 3.7V 1500mAH | 6PCS 3030   | 5.5V 1.6W  |
| JY14002-8 | 190X90X70  | 18650 3.7V 1500mAH | 8PCS 3030   | 5.5V 2.2W  |
| JY14003   | 126X96X50  | 14500 3.7V 400mAH  | 20PCS 2135  | 4.5V 0.35W |

THE SOLAR AND LED BULB SERIES



**66006 SERIES**

| POWER | LUMEN   | SIZE     |
|-------|---------|----------|
| 9 W   | 720 Lm  | Ø60×115  |
| 13W   | 1040 Lm | Ø70×125  |
| 18W   | 1440 Lm | Ø80×140  |
| 24W   | 1920 Lm | Ø100×165 |
| 32W   | 2560 Lm | Ø115×190 |
| 36W   | 2880 Lm | Ø125×205 |



**66005 Emergency bulb**

|          |                        |   |
|----------|------------------------|---|
| 66005-7  | 7W Emergency bulb Ø60  | E27 85-265V 2835 chips 3.7V 18650 800mAH  |
| 66005-9  | 9W Emergency bulb Ø70  | E27 85-265V 2835 chips 3.7V 18650 1200mAH |
| 66005-12 | 12W Emergency bulb Ø80 | E27 85-265V 2835 chips 3.7V 18650 1200mAH |



67008



67011



67010

|       |                  |          |            |                    |
|-------|------------------|----------|------------|--------------------|
| 67008 | 100W             | Ø105X145 | 40PCS 2835 | 3.7V 18650 2400mAH |
| 67010 | 300W             | Ø195X25  | 72PCS 5730 | 3.7V 18650 1800mAH |
| 67011 | 220X135<br>5V 3W | Ø105     | 2835 chips | 3.7V 18650 3600mAH |